

20/21 Nov

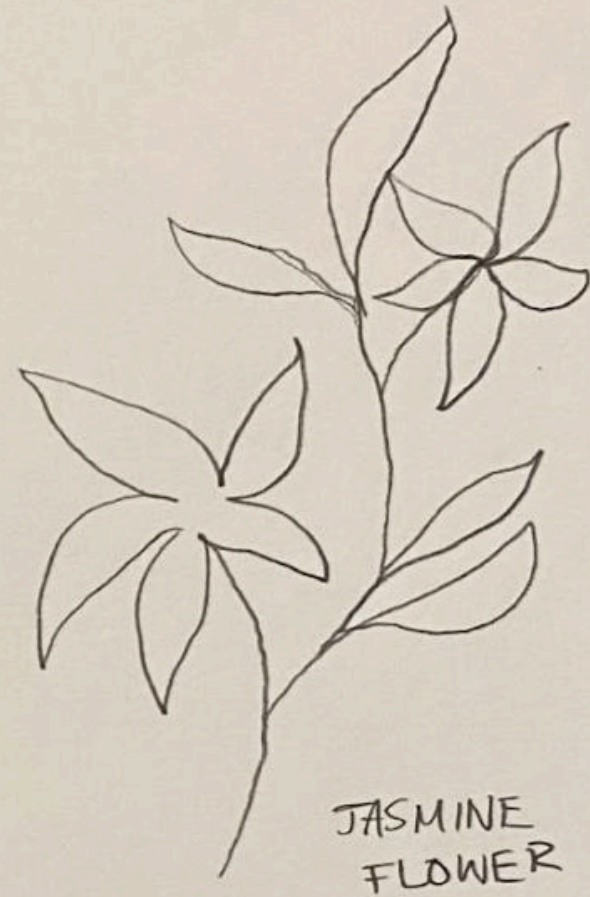
From Author To Mediator

DESIGNING PERSPECTIVES

- Concrete poetry: arranging words to convey meaning
↳ often corresponds to the subject of the poem

POEMS / Calligrams

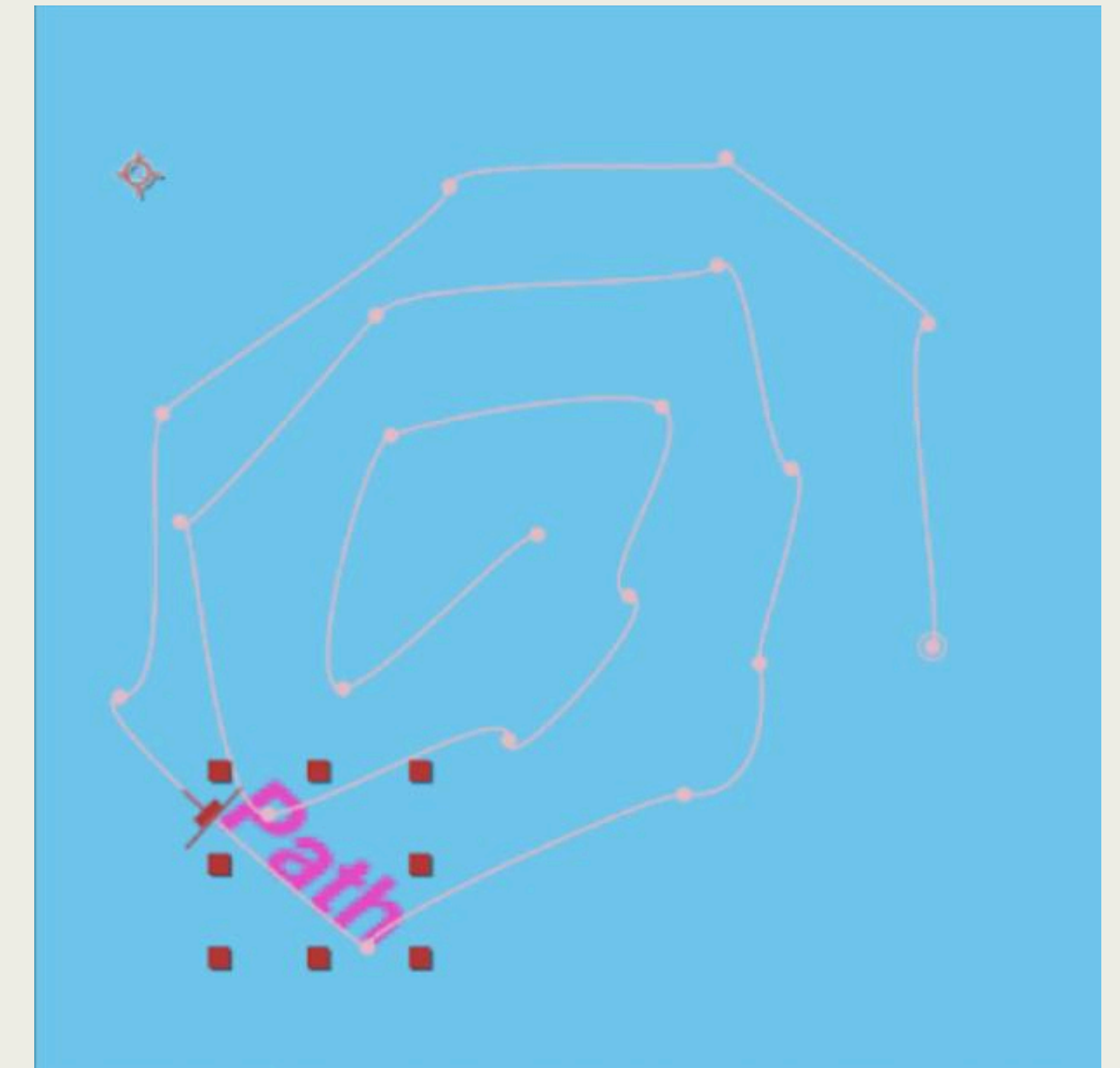
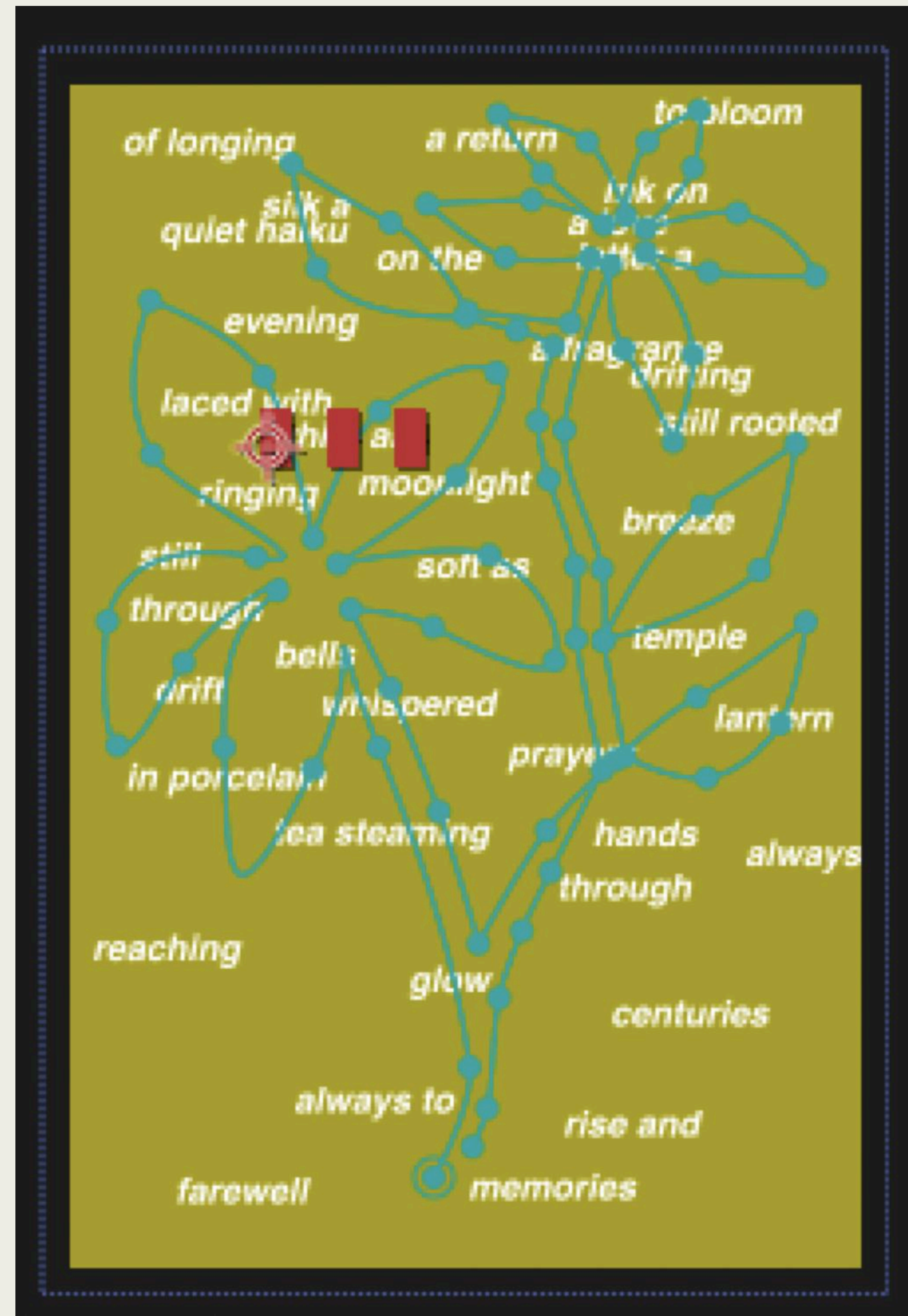
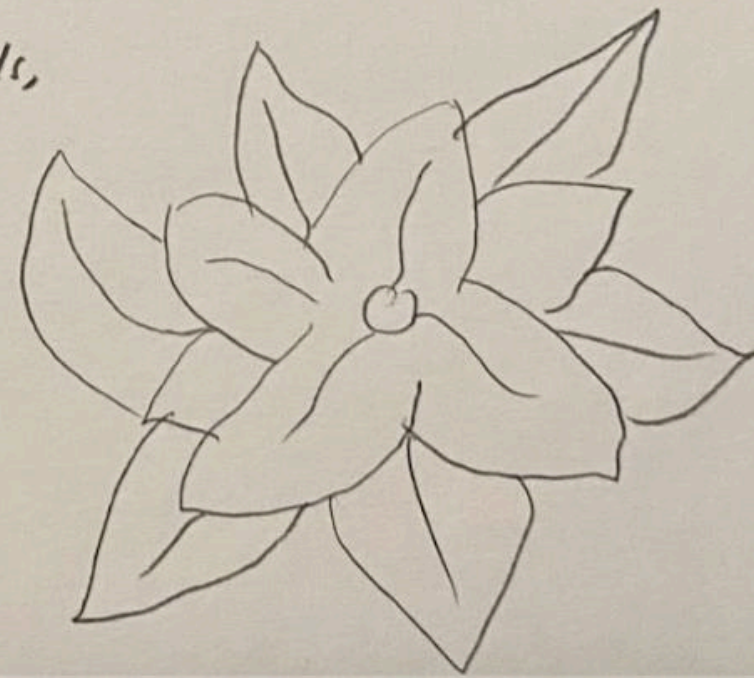
• 11 DEUT - GUILLAUME APOLLINAIRE



Own Poem
• flowers? Rose, Peonie, Jasmine

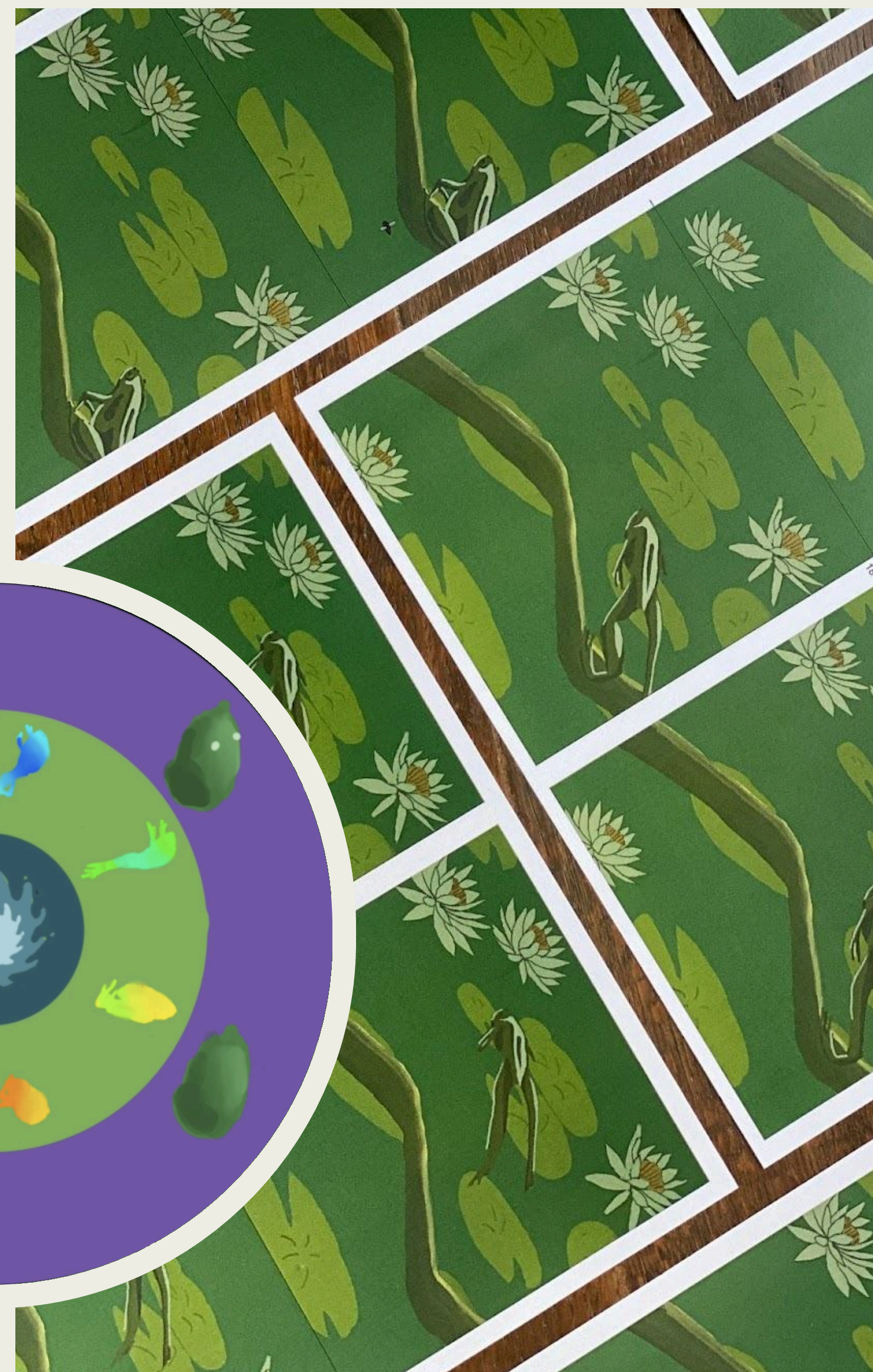
White as moonlight,
soft as whispered prayers,
drifting on the ~~night~~ evening breeze,
a fragrance laced with memories,
a temple bells ringing,
tea steaming in porcelain hands,
ink on silk,
a quiet haiku,
a love letter,
a farewell,
a return,
still rooted,
still reaching.
through lantern glow,
through centuries of longing

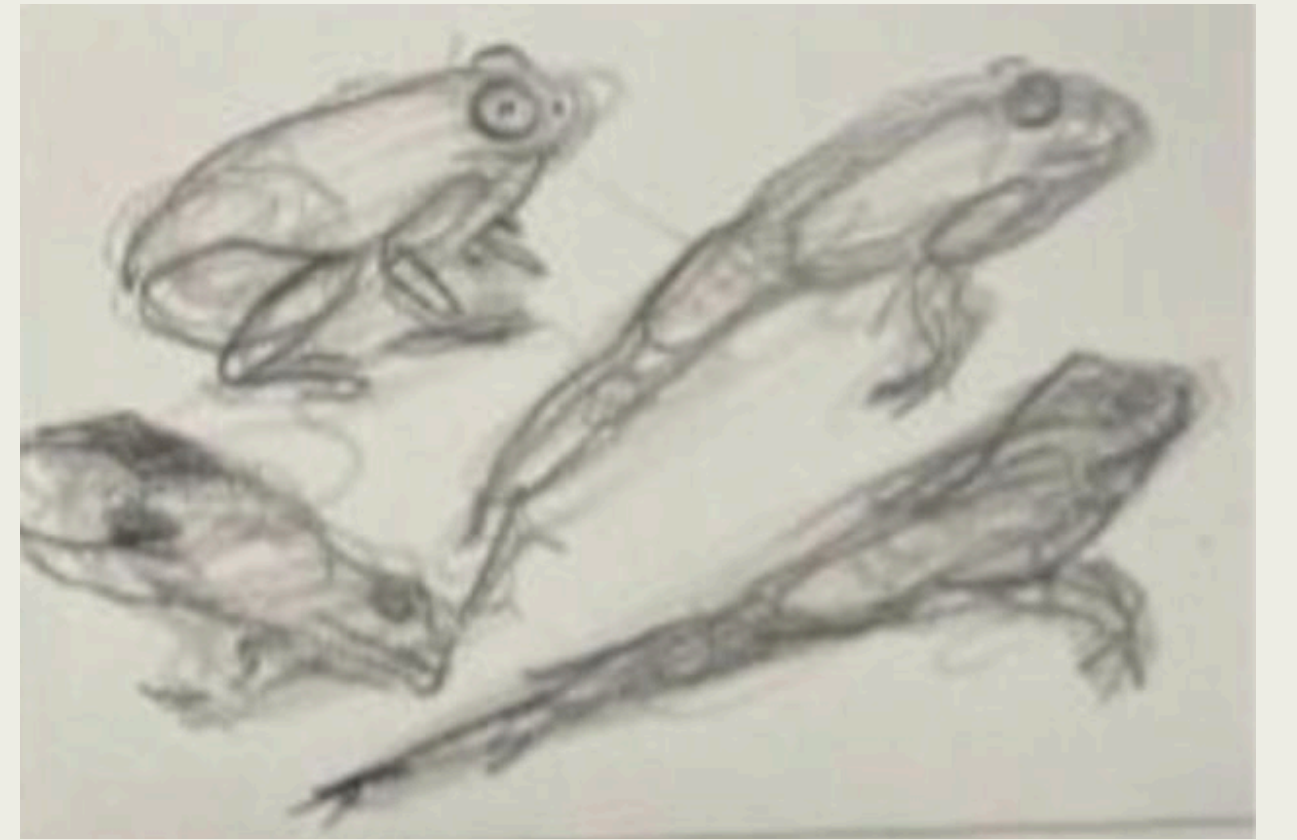
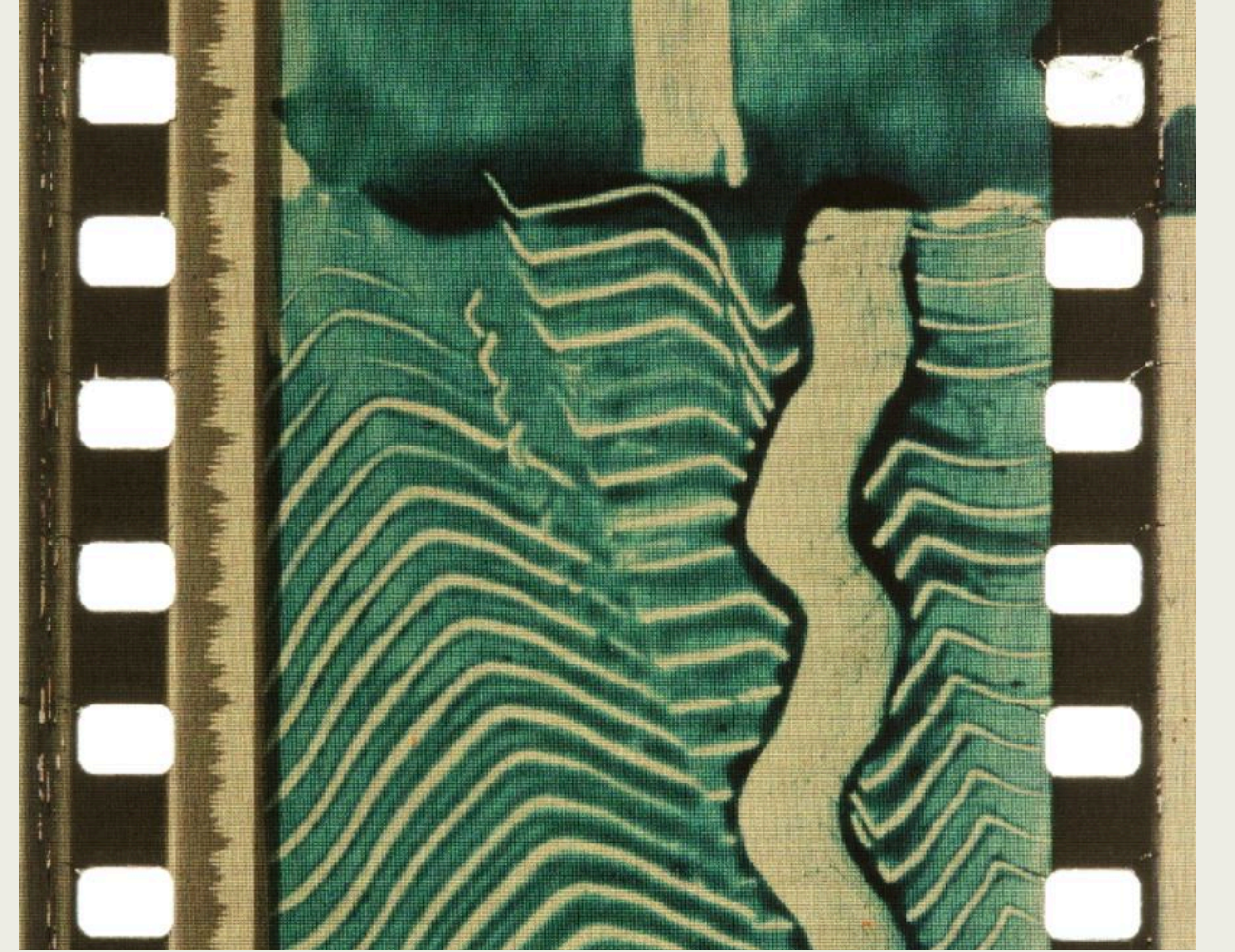
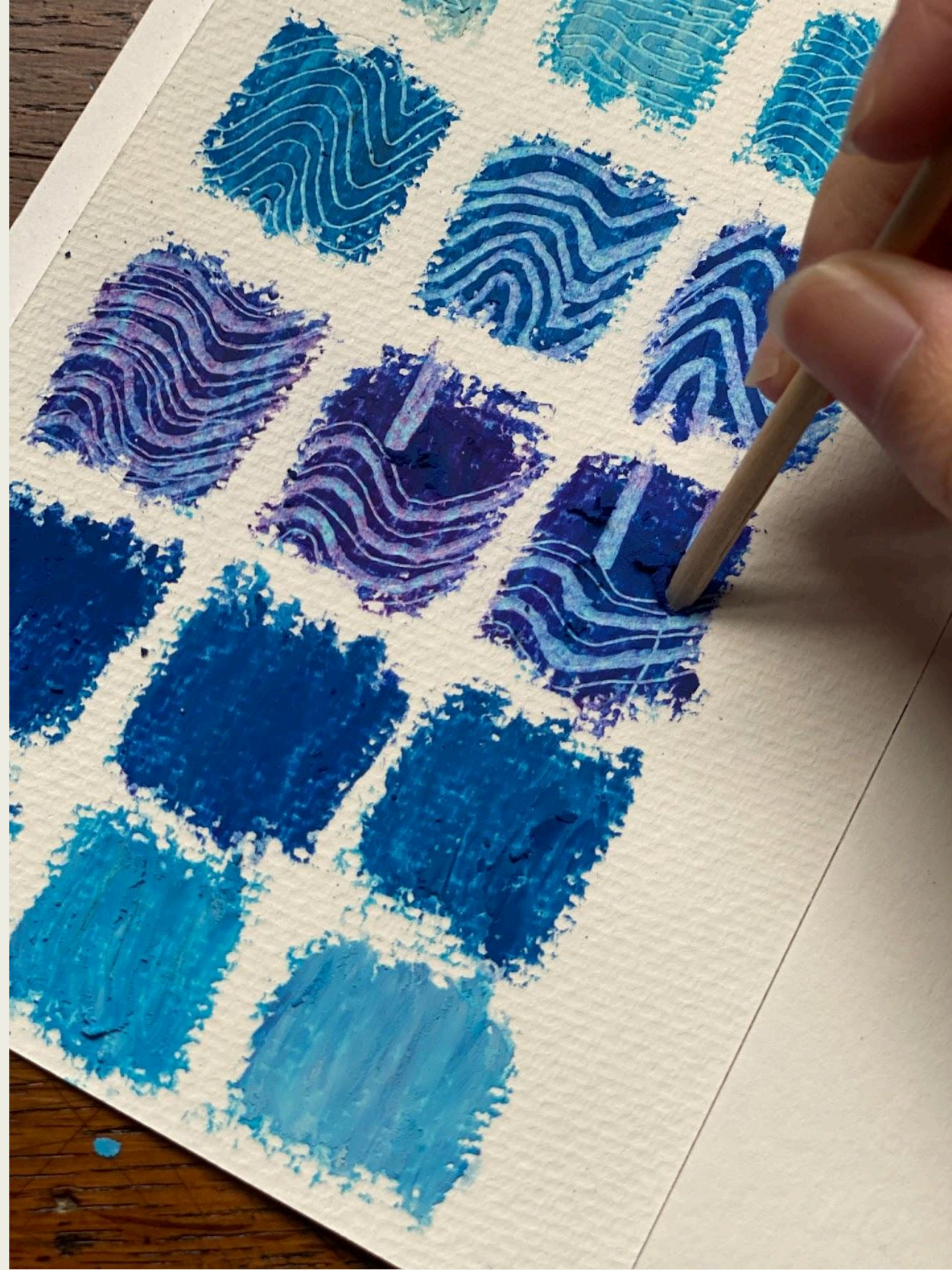
always to bloom,
always to
rise and
drift.



古池や 蛙飛び込む 水の音

—— 松尾芭蕉





Measuring Perception

HOW TO ACCURATELY
MEASURE PERCEPTION?

HOW TO REVEAL PEOPLES
WAY OF SEEING?

HOW TO EXPRESS
ALTERNATIVE PERCEPTIONS?



Sarah The old Pond

1. Oct 2025

1:01

Hamin The old pond

1. Oct 2025

0:11

Izabella The Old pond

1. Oct 2025

0:19

Jack The Old Pond

28. Sep 2025

0:46

Callum The old pond

2. Oct 2025

0:03

Alexis the old pond

1. Oct 2025

0:58

Faustine The Old Pond

1. Oct 2025

0:48

Armand The Old Pond

1. Oct 2025

0:56

🎧 Caroline Bergvall - Via

48 Dante Variations

*“Along the journey of our life half way
I found myself again in a dark wood
wherein the straight road no longer lay”*

DALE, 1996

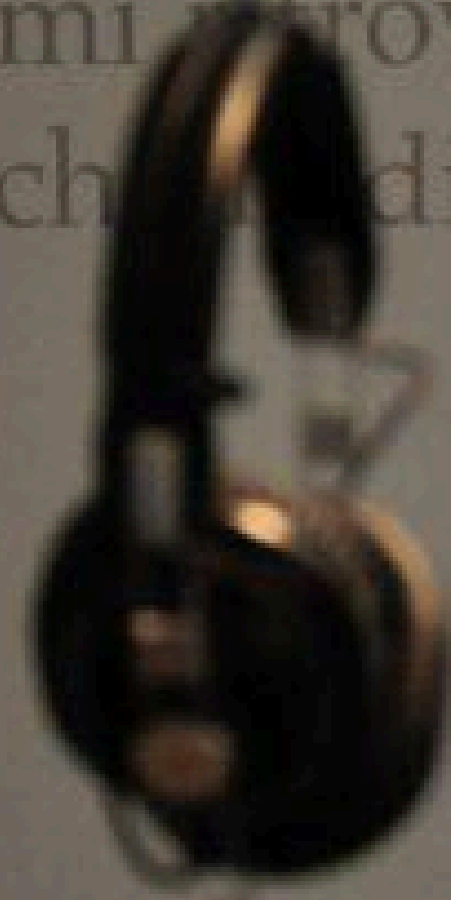
*“At the midpoint in the journey of our life
I found myself astray in a dark wood
For the straight path had vanished.”*

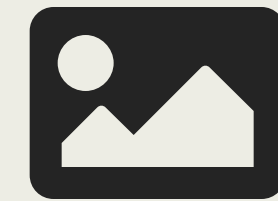
CREAGH AND HOLLANDER, 1989

*“HALF over the wayfaring of our life,
Since missed the right way, through a night-dark wood
Struggling, I found myself”*

MUSGRAVE, 1893

Nel mezzo del camm
mi ritrovai per una s
che la diritta via era



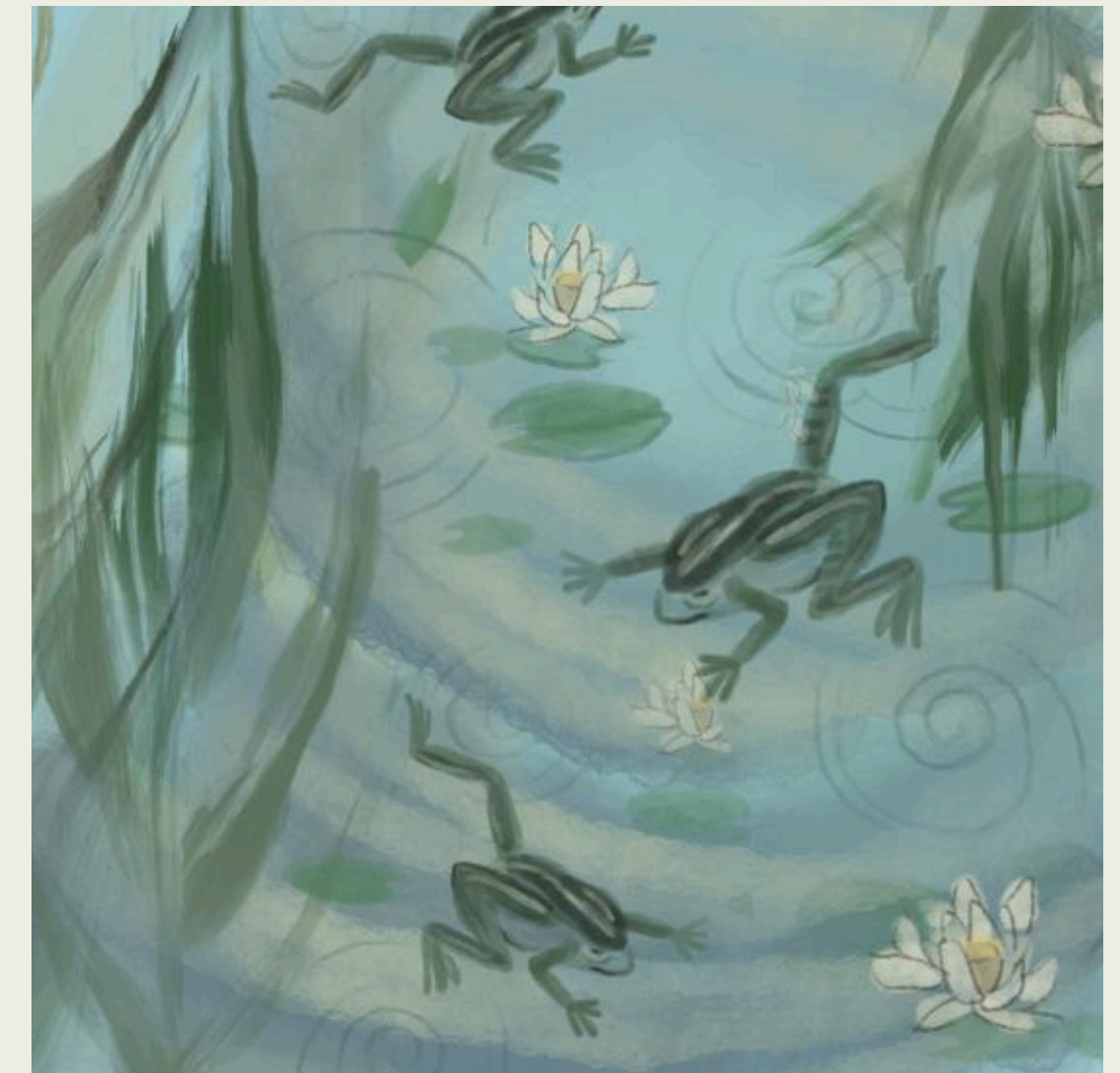


Jack The Old Pond

28. Sep 2025

0:46

“There are frogs, sort of hopping around the lake. They have these sort of lines on their backs, like cool frogs. On the lily pads, there are flowers, too, and the water ripples constantly from all the action. ”

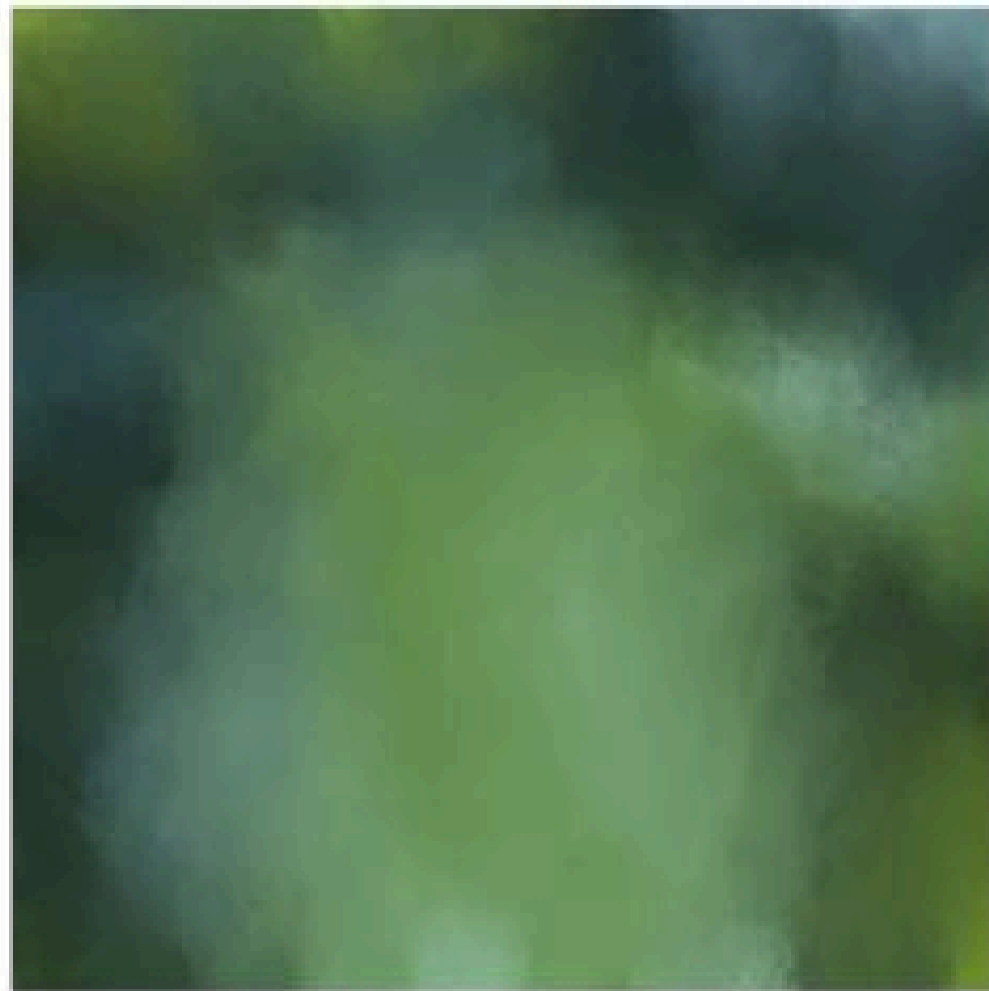


How Can Multiplicity Be Represented Without Collapsing Into Chaos?

DESIGNING FOR PLURALITY

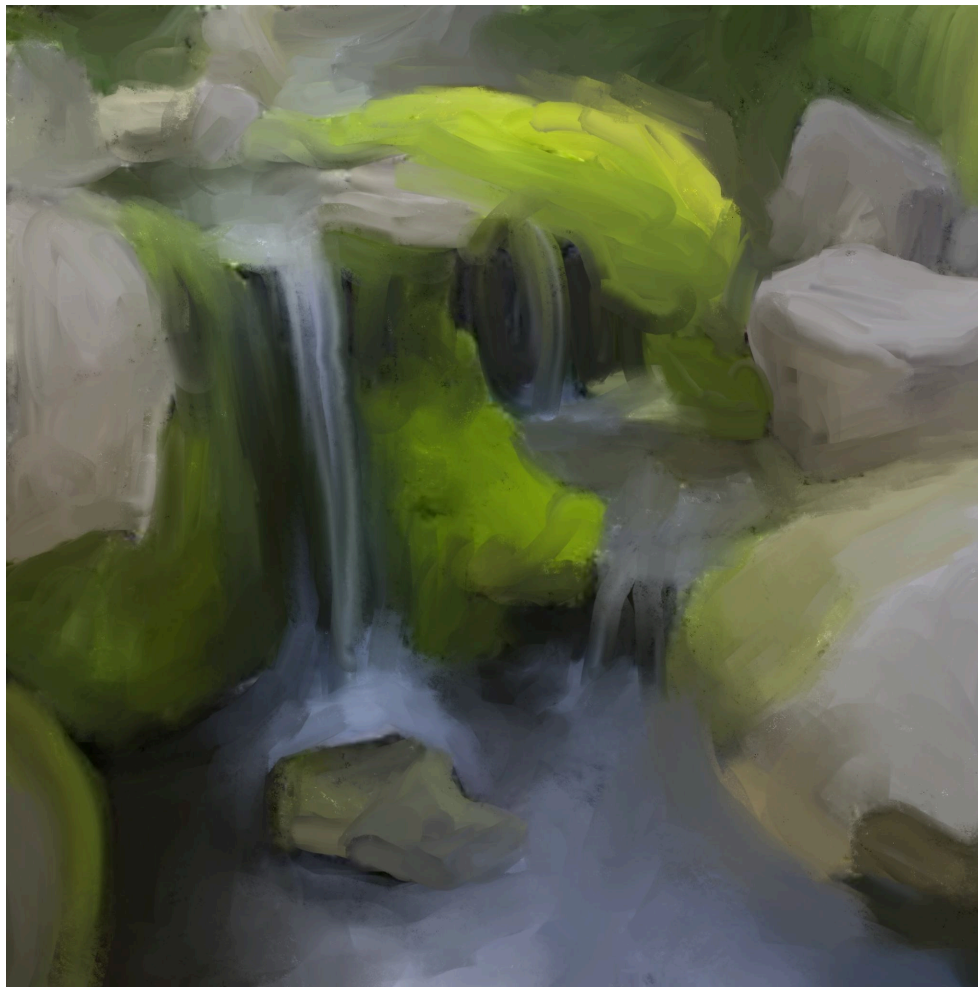


SEASCAPES SERIES BY JAPANESE ARTIST HIROSHI SUGIMOTO



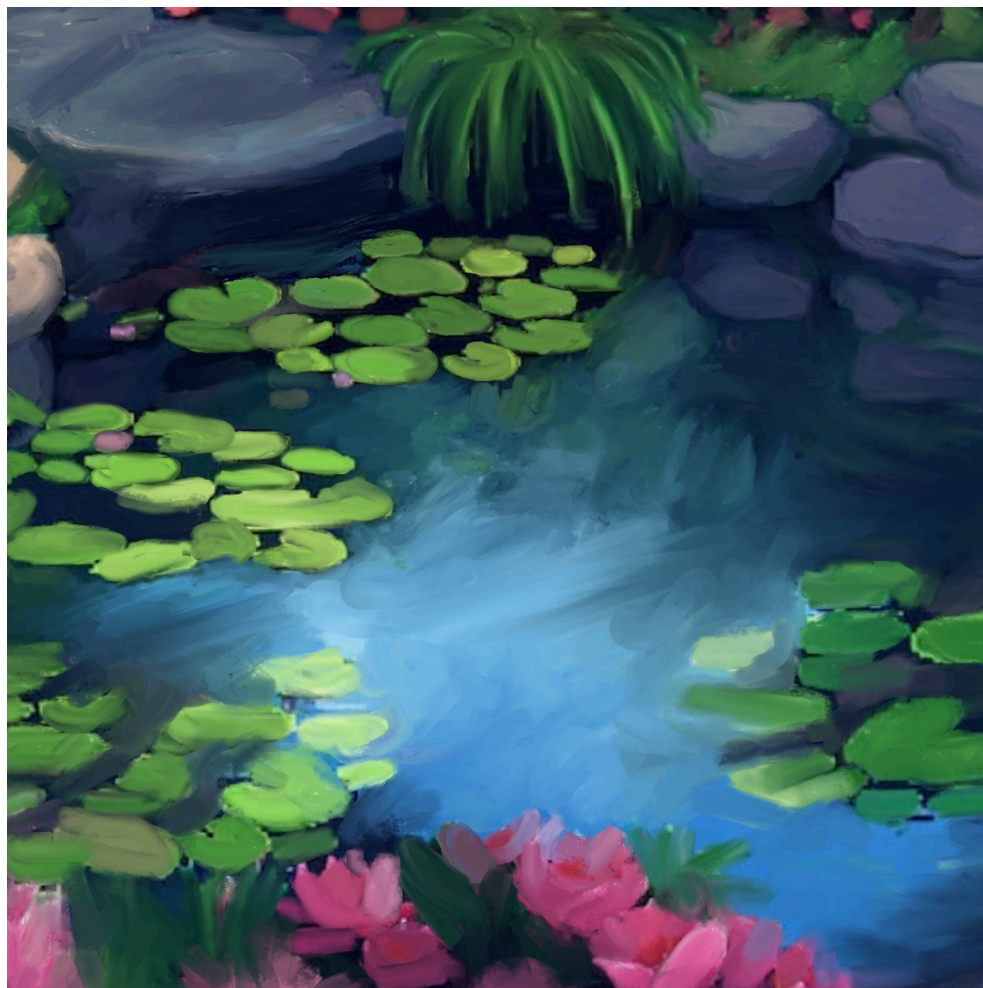
An old silent pond...
A frog jumps into the pond,
splash! Silence again.

Translated by Harry Behn



There's a waterfall, and some small streams that feed into the pond, but its not very loud as they're small streams like I said. I pictured many rocks that enclose the pond and isolate it from its environment, a little bit like a cenote.

Izabella, 20



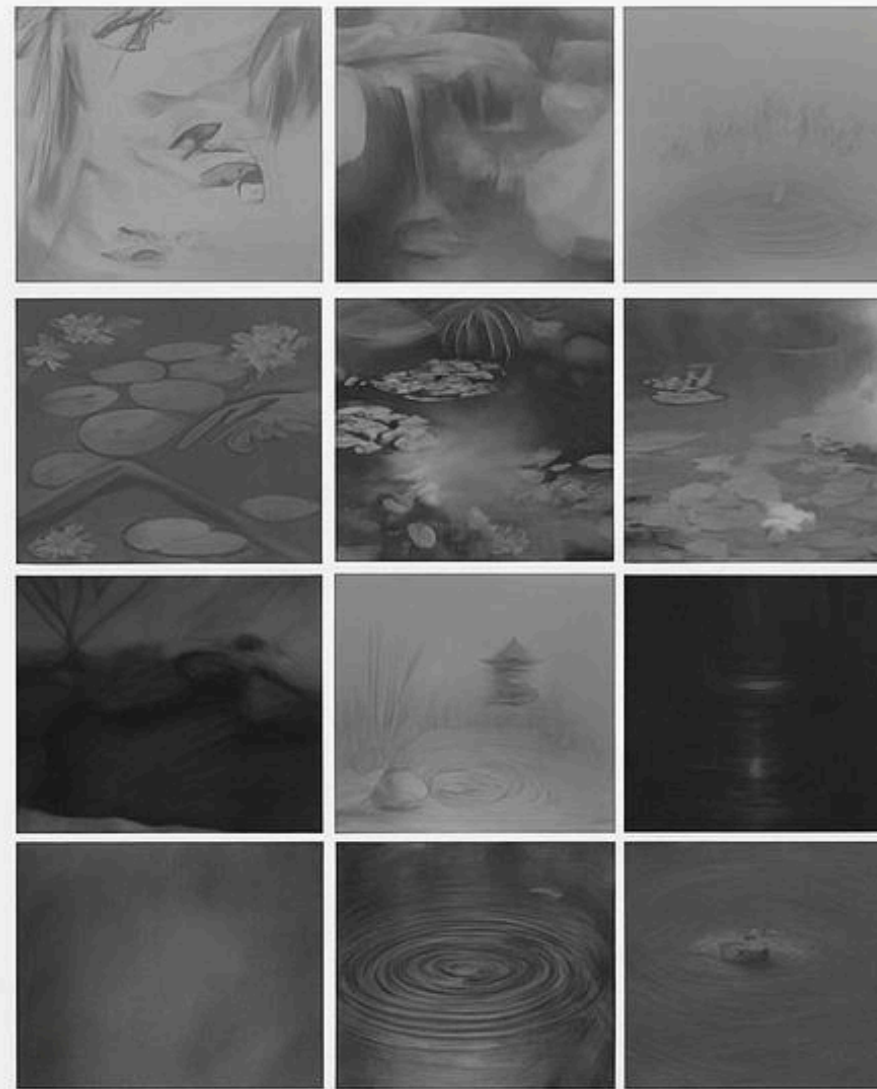
It's a colourful pond, with many flowers and lily pads. I imagine it's quite a still and quiet pond because the frogs go there, and the sun is shining quite brightly today, so the water is bright blue.

Hamin, 21, South Korea

Projections



DESIGNING PERSPECTIVES



01



*Businesses and all types of individuals. The credit limit is 25% of current assets. For each type of business, there are different, various decision tables available for all business.

And, T. J. Forest, Editor

02



There is no initial and more useful argument that has been put forward to counter the view that the current level of the country's debt is not sustainable. It is not sufficient to say that the country has a high level of income, a high level of growth,

Institute of Education Studies

03



There isn't a really sophisticated algorithm and some might be worried. The 14 pages went up and hope I learned from it. All things I'm calculating are for a group of like events.

© 2006 The Authors
Journal compilation © 2006 Blackwell Publishing Ltd

04

07



For example, the research suggests that the more people who are involved in the decision-making process, the more likely they are to be committed to the decision. This is because people who are involved in the decision-making process are more likely to understand the reasons behind the decision and to feel that their input was valued. This can lead to a greater sense of ownership and commitment to the decision.

— **Featuring the Editors of**

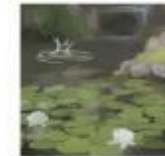
08



If a structure is not a function, it is not a function. I thought it might be an interesting question to ask, but it is not. It is a question about the definition of a function, and it is not a question about the definition of a structure.

Harmon, C. 1999. *Harmon*. 1999.

9



There is a fourth point made here that the lengthening has the status of an unlicensed lengthening by vowel raising, and that this is why it is not subject to the same constraints as the other lengthenings.

Copyright © 2004 by John Wiley & Sons, Inc.

1C



It's not just the color and texture that appeal to the eye. In the center of the room, a large, ornate chandelier hangs from the ceiling, casting a warm glow over the entire room. The walls are covered in a patterned wallpaper, and the floor is made of polished wood. The room is a perfect blend of old and new, with a touch of modernity in the furniture and decor.

100-44-00000



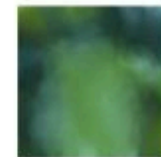
If α is a closed curve, and β is a disk with boundary α , then one half of the support of the Monge-Ampère measure of any positive semidefinite Hermitian metric on β lies off the support of α .

Wilson, B. J., 1997.



If I like something in my distribution, I will buy more of it, and if I don't like it, I will buy less. The resulting new point, I promise, will be my opinion on the value of the new product, and I will be happy to let you know.

© 1996 CRC LLO



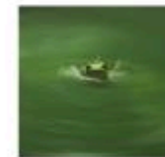
There is nothing more to it, a matter of a few lines and a couple of paragraphs at most. These people usually give a call every time of the day or twice a week, for example.

Copyright © 2004 John Wiley & Sons, Ltd.



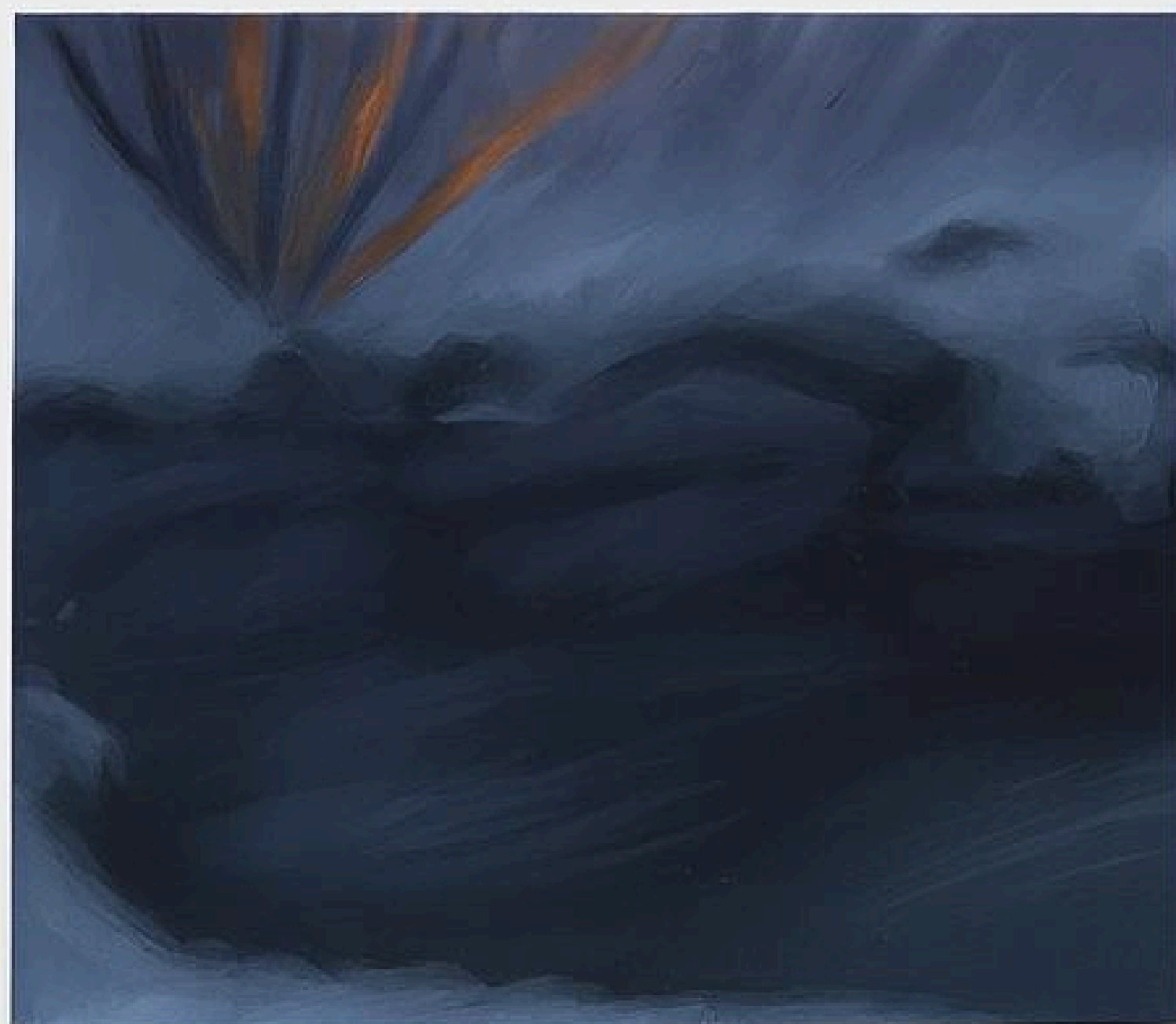
I would not disagree that the current policies of self-reliance or economic self-sufficiency of the region are not the solution to the long-term problem of a commitment to not begin again with colonialism.

June 28, 2002



The authors have no competing financial interests. No patent or financial interest was declared.

Source of Protein



It's cold, like icy, snowy cold, and its just after sunset, so the blue of the night and on the snow really pops in my mind. Theres this pond that's just about to freeze over, and not much vegetation around.

Imaad, 24, Qatar

Thank You